

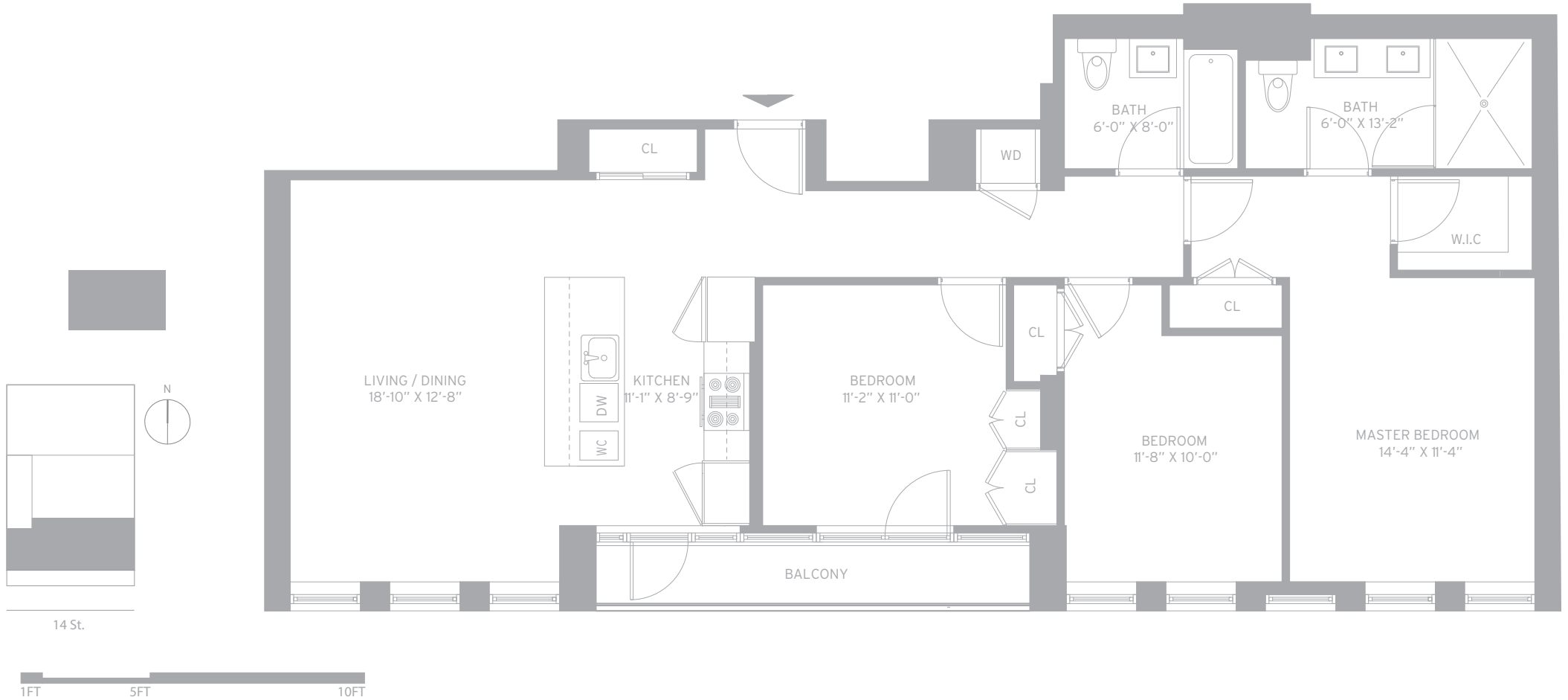
# 2B - 4B

## 3 BEDROOM, 2 BATH

Interior 1,335 SF  
Exterior 60 SF

### 225 14th

PARK SLOPE



718.422.1225 / sales@22514th.com / 22514th.com

Exclusive Sales & Marketing: Halstead Property | The Aguayo Team



The complete offering terms are in an offering plan available from sponsor. File no. CD 17-0148. Sponsor: 225 14 Street Owner, LLC. 110 East 40th Street, Suite 803, New York, NY 10016. Plans and dimensions may contain variations from floor to floor. Square footage exceeds the usable floor area. The unit layout, square footage, and dimensions are approximate and subject to normal construction variances and tolerances. Sponsor reserves the right to make changes in accordance with the offering plan. The artist's representations of interior decorations, finishes, appliances and furnishings are provided for illustrative purposes only, and do not constitute a representation of any aspect of the final product. Prospective purchasers are advised to review the complete terms of the offering plan for further detail as to type, quality and quantity of materials, appliances, equipment, and fixtures to be included in the units, amenity areas and common areas of the condominium. Equal Housing Opportunity.

# 225 14th

PARK SLOPE

## BUILDING & RESIDENCE FEATURES

---

### RESIDENCES

---

- 7.5" wide-plank European white oak flooring
- Bleached walnut entry doors
- 8-foot tall windows
- Bosch washer and dryer
- High efficiency zoned Mitsubishi heating and cooling system
- Private terraces overlook either tree-lined 14th Street or the landscaped rear garden. The penthouse residence features both.

### MASTER BATH

---

- Athens grey marble flooring
- White porcelain slab walls
- Floating stained oak dual-vanity with undermount Duravit sinks
- Watermark fixtures and accessories in nickel finish
- Backlit mirrored medicine cabinets
- 48" x 72" shower with Athens grey marble feature wall
- Heated floors
- Duravit Toilet

### KITCHEN

---

- Bardiglio marble countertop and backsplash
- Super-matte white lacquer cabinetry
- Stained white oak wood veneer island with breakfast bar
- Fisher & Paykel 36" refrigerator with custom panel
- Bosch dishwasher with custom panel
- Bosch undercounter microwave drawer
- Bosch gas range and electric oven
- Under-counter wine refrigerator
- Kohler stainless steel undermount sink with Watermark faucet

### SECOND BATH

---

- Driftwood grey marble flooring and feature walls
- Floating stained oak veneer vanity with driftwood grey marble countertop and undermount Duravit sink
- Watermark fixtures and accessories in pewter finish
- Marble-surround Duravit bathtub
- Duravit toilet

### AMENITIES

---

- 24-hour Cyber Doorman
- Lobby Lounge
- Garden Terrace
- Fitness Studio
- Children's Creativity room
- Package room
- Bike storage room
- Individual storage available for purchase
- Individual parking spaces available for purchase

718. 422. 1225 / sales@22514th.com / 22514th.com

Exclusive Sales & Marketing: Halstead Property | The Aguayo Team

Developed by: EDG Development

The complete offering terms are in an offering plan available from sponsor. File no. CD 17-0148. Sponsor: 225 14 Street Owner, LLC, 110 East 40th Street, Suite 803, New York, NY 10016. Plans and dimensions may contain variations from floor to floor. Square footage exceeds the usable floor area. The unit layout, square footage, and dimensions are approximate and subject to normal construction variances and tolerances. Sponsor reserves the right to make changes in accordance with the offering plan. The artist's representations of interior decorations, finishes, appliances and furnishings are provided for illustrative purposes only, and do not constitute a representation of any aspect of the final product. Prospective purchasers are advised to review the complete terms of the offering plan for further detail as to type, quality and quantity of materials, appliances, equipment, and fixtures to be included in the units, amenity areas and common areas of the condominium. Equal Housing Opportunity.